

Miller DuraHoist™ Vehicle Hitch Mount Sleeve

Models: DH-12 (for maximum 29in. offset), DH-25 (for maximum 48in. offset)

Description

Designed to install into a 2in. receiver on an attendant vehicle to provide a portable anchor point for confined space entry/retrieval, rescue and fall arrest systems. Various sockets, extensions and accessories are available for use with the sleeve.

Materials

General Construction:	Welded Steel/Aluminum
Weld Certification:	AWS
Material (aluminum):	5052 H32, 6061 T6 Aluminum
Finish (aluminum):	Safety Yellow Powder Coat
Material (steel):	HR Steel Plate, Sch.40 Pipe
Finish (steel):	Zinc Plated
Liner Material:	PVC Pipe, ASTM D 1785
Thrust Bearing Material:	High Density Polyethylene
Hardware:	Gr.5, Gr.8 - Zinc Plated
Plating Specification :	ASTM Designation B633 85, Type II, SC2

Technical

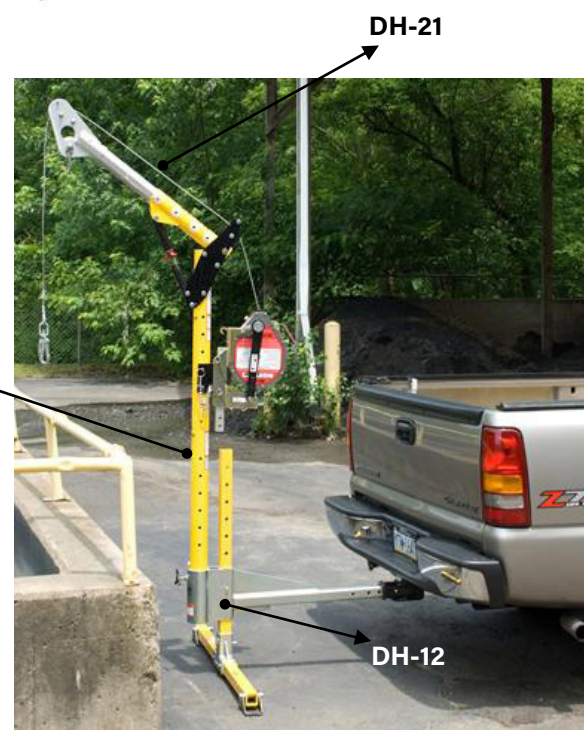
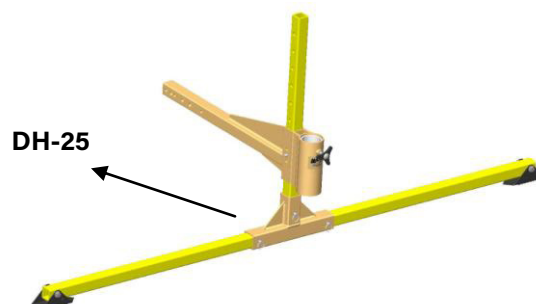
Working Load :	450 lbs (204 g) working
Design Factor:	Dependent on other system components, minimum 4:1 Design Factor
Proof Load:	90,000 in lbs (10,200 N.m)

Weights

DH 12:	58 lbs (26.3kg)
DH 25:	72 lbs (32.7kg)

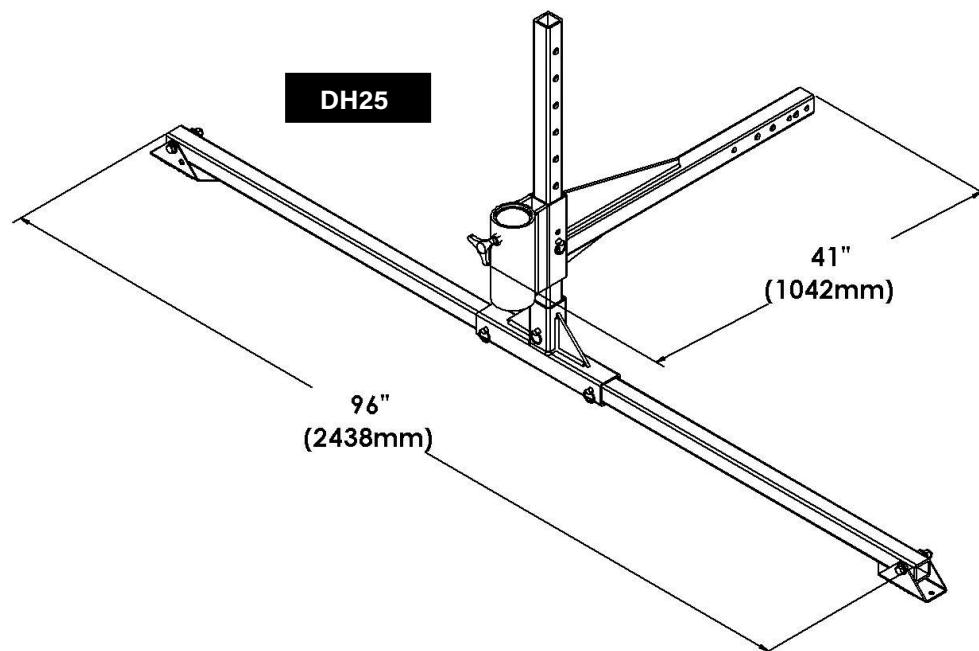
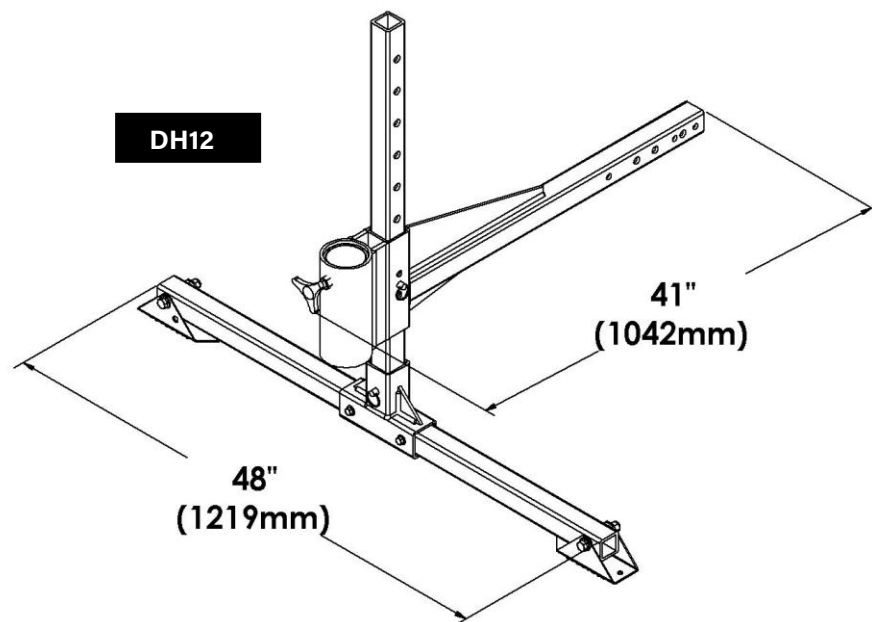
Application Restrictions

1. This device is intended for use with equipment and accessories manufactured and/or approved by Miller. Accessories are subject to various application restrictions as outlined in the application accessory specifications sheets.
2. Anchoring to an attendant vehicle may not be permitted within certain jurisdictions. Ensure that the use of this equipment does not violate any regulations within your area. Vehicle Hitch Mount (DH12) shown with TwoPiece Adjustable Upper Mast (DH21, 12in. - 29in. offset) and Lower Mast Extension (DH22/33)
3. The Vehicle Hitch Mount Sleeve (DH12) is to be used with a 29in. (737mm) *maximum* offset mast (OnePiece Adjustable Mast, DH3 or TwoPiece Adjustable Upper Mast, DH21).
4. The Vehicle Hitch Mount Sleeve (DH25) is to be used with a 48in. (1219mm) *maximum* offset mast (OnePiece Adjustable Mast, DH3; TwoPiece Adjustable Upper Mast options, DH21/DH23).
5. Hitch Mount Sleeve Extensions are available to position the sleeve further away from the attendant vehicle. Only one (1) extension at a time is to be used. Multiple hitch mount extensions are not to be used.
6. Each installation must be approved to local standards by a qualified engineer.



Miller DuraHoist™ Vehicle Hitch Mount Sleeve

Models: DH-12 (for maximum 29in. offset), DH-25 (for maximum 48in. offset)



UNITED STATES AND CANADA

For More Information

www.pipglobalsafety.com | [Contact us](#)

PIP
GLOBAL SAFETY